

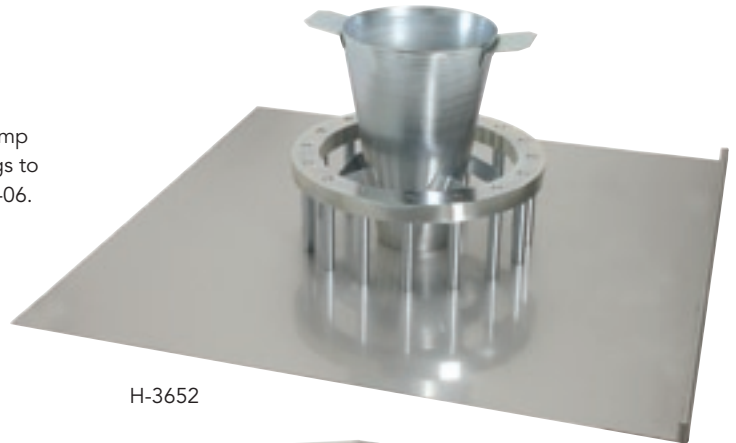


Self Consolidating Concrete (SCC) Flowability

These tests are used to determine the flowability and passing ability of self-consolidating concrete (SCC), ASTM C1621. Passing ability refers to the ability of SCC, under its own weight (without vibration), to flow into and completely fill the spaces within intricate framework, containing obstacles such as reinforcement bars.

J-Ring Test Set, Smooth Rods— H-3652

Provides a method to measure the distance of lateral flow of Self Consolidating Concrete. Designed for durability, the set includes a slump cone, J-Ring with smooth rods, and steel baseplate with engraved rings to measure flow distance. Complies with ASTM standards C1621/1621M-06.



H-3652

J-Ring Test Set, Rebar Rods— H-3652R

Same as above except J-Ring has rebar rods.

Individual Components

J-Ring, Smooth Rods	H-3654
J-Ring, Rebar Rods	H-3654R
Stainless Steel Base Plate, Engraved	H-3653
Slump Cone	H-3640

L-Box Flowability Test— H-3658

Method used to determine flow rates and passibility of SCC in confined spaces. Test box is comprised of concrete reservoir, slide gate, three obstacles and test basin. Includes metal strikeoff bar.

V-Funnel Flowability Test— HC-3665

Stainless steel construction with 10L capacity. Upper edge is smooth and reinforced and the outflow orifice is equipped with seal valve. Includes polyethylene box to collect discharge and 900mm long straight edge to level concrete before test.



HC-3665



HC-3666

Static Segregation Column Mold— HC-3666

Used to determine the potential static segregation of self-consolidating concrete. An easy-to-use clamping and collection system allows the segregation test to be conducted by a single operator. Built with Schedule 40 PVC, the 8" diameter mold has sections of 6.5", 13", and 6.5" in height. The supporting base is 15" x 15". The 2 collection plates are 8.5" wide stainless steel.

Self Consolidating Concrete Video Training CD— SCC07

Use this interactive CD to train your technicians on how to properly test self-consolidating concrete (SCC) in the field and laboratory. The CD covers ASTM C1610– Column Segregation, C1611– Slump Flow, and C1621– Passing Ability, J-Ring. The CD also includes information on the basics of SCC. Each test procedure is explained using slide presentations, test specific video demonstrations, glossary of terms, and a step-by-step procedural outline. Use the multiple choice quiz to assess your knowledge of the test procedure. Comes with a Multi-User license.



SCC07



H-3658